
A NOVEL TECHNIQUE FOR DYNAMIC COLLECTOR VOLTAGE & CURRENT CLAMPING METHOD FOR DRIVING HIGH POWER SEMICONDUCTOR TO ENHANCE AVAILABILITY OF HIGH-POWER CONVERTERS IN EV

Hiren Brahmhatt^a, Dr. Thangadurai N^b

a Research Scholar, Sankalchand Patel University, Visnagar, GJ, INDIA,
hirelect@gmail.com

^b Professor and Dean, Department of Computer Science & Engineering, Rajeshwari
College of Engineering, Bangalore, mrgoldspu2021@gmail.com

ABSTRACT

The electric drive and the batteries are the two primary parts of an electric vehicle (EV). In order to increase the availability and dependability of the semiconductors used in traction converters, this research focuses on a new approach of semiconductor (IGBT) protection. The IGBT spike voltage during a short circuit situation was successfully reduced by a newly created active voltage and current clamping circuit. This innovative method restricts IGBT's collector-emitter voltage during the turn-off event. As soon as the collector-emitter voltage of the IGBT crosses a predetermined threshold, the IGBT is partially turned on. The IGBT is then kept operating linearly, minimizing the rate at which the collector current falls and, consequently, and the collector-emitter over voltage. Simultaneously, during the short circuit, the current is monitored by a high precision hall-effect sensor allegro make IC, which detects over current and provides a fault output within 1 second. As a result of the combination of current and voltage monitoring, the likelihood of the IGBT failure is reduced.

KEYWORDS

Dynamic (active) voltage clamp, Current clamp, IGBT, reliability, EV (Electric Vehicle), VCE (collector-emitter voltage)

1. INTRODUCTION

Electric vehicles (EVs) have gained recognition as the most eco-friendly transportation option, primarily due to their emission-free nature, emitting no CO₂ [5]. The automotive industry as a whole is actively engaged in the development of EVs, with several already available on the market. To meet the demands for performance, the power output of EV motors now exceeds 100 kW [4].

One of the key factors contributing to their exceptional performance, including power density, switching frequency, energy efficiency, and cost-effectiveness, is the widespread utilization of insulated gate bipolar transistor (IGBT) power modules in various high-voltage and high-power applications, such as electric vehicles (EVs), wind turbines, smart grids, and industrial drives [1][2]. Ensuring the efficiency of power semiconductors is crucial for achieving cost competitiveness in EV inverter applications, as these components significantly influence almost half of the module's total cost.

Given their significance in the market, EVs cater to a wide mass audience that prioritizes both safety and cost efficiency. However, it is essential to address the vulnerability of IGBTs in the EVs' traction converter, as their failures could lead to sudden power or traction converter breakdowns, potentially resulting in severe accidents with human lives at stake.

In electric vehicles (EVs), semiconductor switches play a vital role in the power electronic system, serving as essential components responsible for controlling the flow of electrical energy. However, their lifespan is notably shorter than that of the overall drive system in the vehicle. Due to this inherent characteristic, these semiconductor switches are regarded as "consumables." In other words, they are subject to wear and tear and need to be replaced multiple times throughout the system's lifespan or before the vehicle reaches a certain mileage or age, typically around 600,000 kilometers or 15 years.

This limited lifespan of semiconductor switches poses an important consideration for EV manufacturers and designers. It emphasizes the significance of optimizing the power electronic system to ensure efficiency, reliability, and overall performance throughout the vehicle's life cycle. Three key aspects stand out in the evaluation of the power electronic system's performance in EVs:

- **Power Density:** Power density refers to the amount of electrical power that the system can handle in relation to its size and weight. It is crucial to maximize power density in EV power electronic systems to ensure that the components can handle the required power demands while keeping the overall system compact and lightweight. High power density allows for more efficient use of space and resources within the vehicle, contributing to improved overall performance and range.
- **System Efficiency:** The efficiency of the power electronic system directly impacts the energy consumption of the EV. Efficient power conversion ensures that minimal energy is lost as heat during the process of converting electricity from the battery to the motor, contributing to longer driving range and improved battery life. Optimizing system efficiency helps enhance the overall energy efficiency of the EV, reducing operating costs and environmental impact.
- **Reliability:** With semiconductor switches being critical consumable components, their reliability is of utmost importance. A reliable power electronic system ensures that the switches operate consistently and without failure over extended periods. Improved reliability leads to reduced maintenance requirements and lower replacement costs, ultimately enhancing the overall lifespan and usability of the electric vehicle.

In conclusion, considering the limited lifespan of semiconductor switches in EVs, power density, system efficiency, and reliability are key focus areas for manufacturers and engineers to ensure the power electronic system performs optimally, contributing to a more sustainable and reliable electric vehicle driving experience.

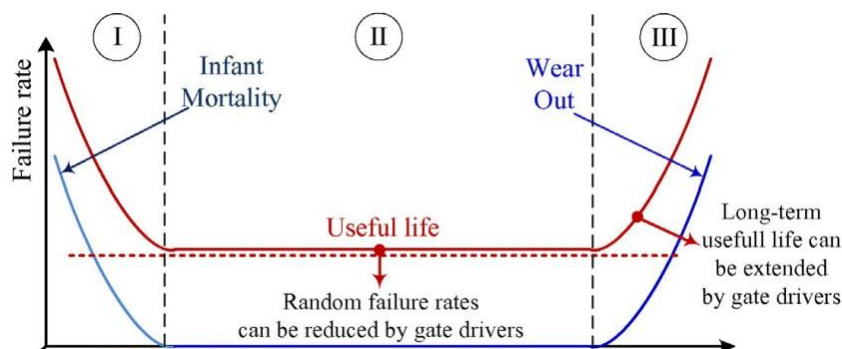


Fig. 1. Typical bathtub curve for semiconductor switches (time v/s failure rate)

In reliability engineering, the classic bathtub curve of semiconductor device showed in Fig. 1 represents three stages of failures. The failures can be divided into three main stages: early failure, middle random failure and the wear-out failure period. The random failures rates and long-term wear out can be detected by the IGBT gate driver protective functions.

Table 1. Failure modes of IGBT modules

Sr.No	External Abnormalities	Cause	Device failure mode
1	Short Circuit (Arm Short circuit, output short circuit, Ground short circuit)	Logic circuit malfunction, less dead band, Load short circuit or wrong wiring	<u>Outside SCSOA</u>
2	Overload	Over current protection error OR logic circuit malfunction	Overheating
3	Collector over voltage	Excessive input voltage, Failure of sensing circuit	C-E Over Voltage
4	Gate over voltage	Static electric charge OR Volt- age spikes due to long length wire	G-E Over Voltage
5	Mechanical Stress	Stress from external wiring	Disconnection from circuit
6	Cosmic Ray Effect	If devices operated >66% of rated voltage	

Table 1 describes the typical failure modes of IGBT. This paper presents a concept with simulation for this new dynamic VCE (collector-emitter voltage) clamping of Si-IGBT during the abnormal or short circuit scenarios i.e. short Circuit (Arm Short circuit, output short circuit, Ground short circuit). Where SCSOA stands for Short Circuit Safe Operating Area.

2. CONCEPT OF DYNAMIC COLLECTOR VOLTAGE CLAMPING

Dynamic (Active) clamping is new technique to limit the collector-emitter voltage of an IGBT during the turn-off event. The IGBT is partially turned on as soon as its collector-emitter voltage exceeds a pre-defined threshold. The IGBT is then maintained in linear operation, thus reducing the fall rate of the collector current and therefore the collector-emitter over-voltage.

In the event of an IGBT short circuit, all IGBTs no longer have to be turned off in a dedicated sequence to avoid excessive IGBT collector-emitter voltages. Instead, the active clamping function limits the maximum collector-emitter voltage of the IGBTs to a safe level, enabling the IGBTs to be simply turned off as soon as the fault condition is detected.

When the IGBTs are driven with a pulse that is shorter than the response time in the event of a short circuit, the fault is not detected, and the conventional driver turns off too quickly. Hence there are more chances of IGBT destroyed by the resulting over-voltage.

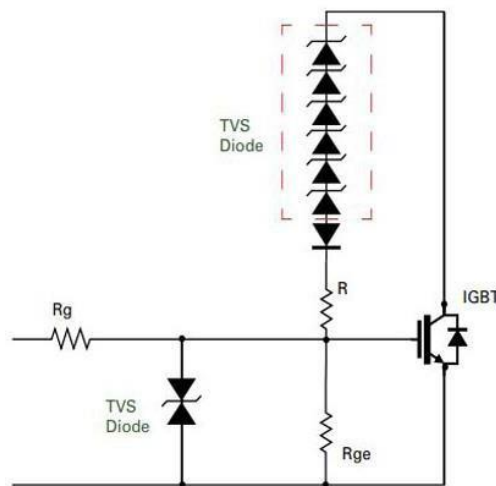


Fig. 2. Dynamic collector voltage clamp using series connected Zener diodes

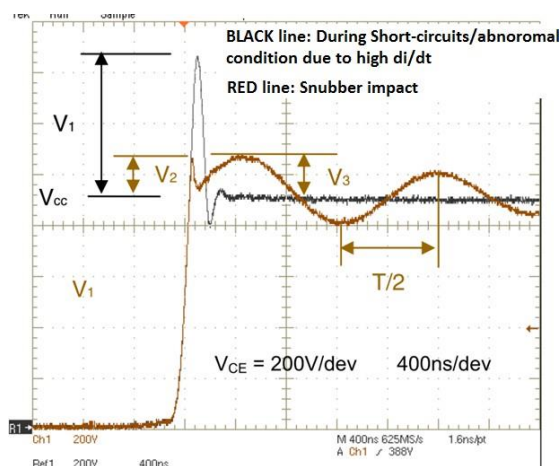


Fig. 3. Switching characteristic during turned-off condition.

The proposed technique focuses on improving the IGBT turn-off switching performance during the abnormal conditions. Fig. 3 shows a generic conventional turn off characteristic of IGBT. Dynamic performance of power semiconductor modules is determined by semiconductor characteristics and its gate driver reconfiguration. Gate driver’s main responsibility is to guarantee semiconductors working reliably in their SOAs through its life

Black line shows voltage V1 across collector-emitter during short circuit condition. Red waveform shows the ringing due to LC resonance. So, it is trade-off between high value of snubber capacitor to reduce Vce overshoot.

$$V1 = \sum L_{dc-link} \times di/dt$$

Where $L_{dc-link} = L_c + L_s + L_{snubber}$

L_c = Module parasitic inductance

L_s = Stray inductance of laminated busbars

$L_{snubber}$ = Snubber capacitor series inductance

In proposed method the TVS (Transient Voltage Suppressor) chain is used to clamp the voltage across IGBT during short circuit scenarios. The selection of TVS is done in such way that the total breakdown voltage of TVS chain is less than rated voltage of IGBT.

2.1. General Format, Page Layout and Margins

Below Fig.4 shows the simulation model of the proposed dynamic active clamping technique. The simulation is done for 1200V IGBT, which is commonly used in the traction converters of EV. Considering the availability of the TVS diodes, 400 V diodes are used to create a breakdown voltage of nearly 1200V considering the tolerances. Fig 5(a) shows the waveform of voltage at collector without dynamic clamping. Fig 5(b) shows the waveform with the dynamic clamping of voltage using the TVS diode chain.

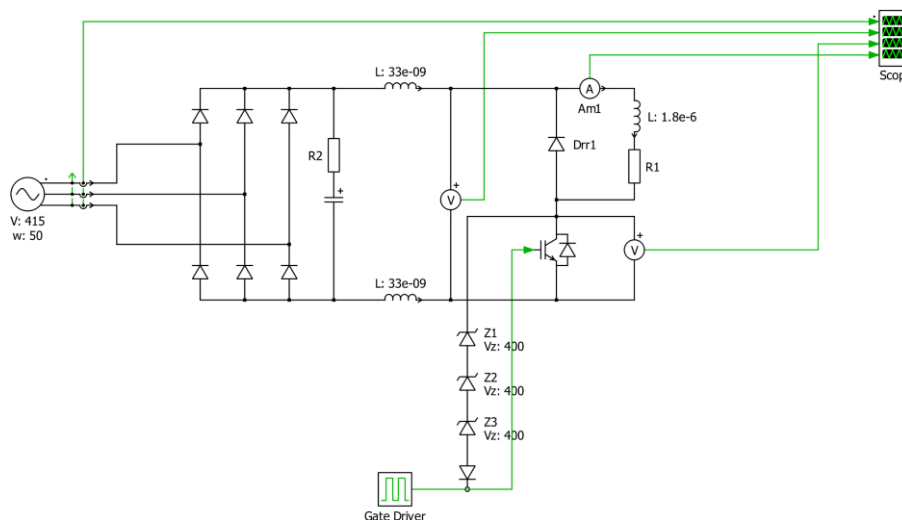


Fig. 4. Implementation of the proposed IGBT protection scheme

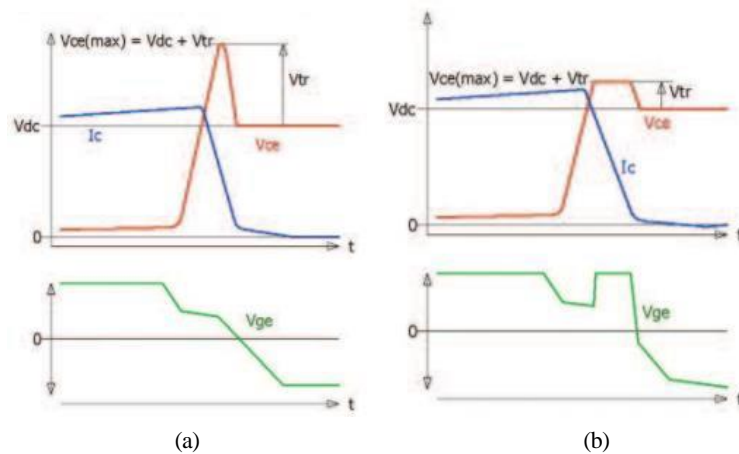


Fig. 5. Vce waveform (a) without dynamic clamp (b) with dynamic clamp

3. CONCLUSIONS

The paper provides a comprehensive examination of dynamic (active) collector voltage and current clamping in electric vehicle (EV) applications. This is achieved through the implementation of a gate driver with a dynamic turn-off transient control method, aimed at safeguarding the insulated gate bipolar transistor (IGBT) used in the system. The proposed method stands out due to its advantageous characteristics, including low cost, straightforward implementation, and high robustness, setting it apart from the state-of-the-art advanced gate drivers available.

One significant challenge discussed in the paper relates to the correct selection of Transient Voltage Suppressor (TVS) components. The maximum clamping voltage (VC) of the TVS is considerably larger than the Breakdown Voltage (VBR), which poses difficulty during component selection. VBR is specified within a wide tolerance range, making it challenging to precisely determine the ideal TVS component for the system.

In summary, the paper introduces a novel approach for dynamic collector voltage and current clamping in EVs using a specialized gate driver. The method offers cost-effectiveness, ease of implementation, and a high level of robustness compared to existing advanced gate drivers. However, it also highlights the complexity in selecting appropriate TVS components due to the discrepancy between the maximum clamping voltage and the specified breakdown voltage range. These findings contribute to the advancement of EV power electronics systems and underscore the importance of careful component selection to ensure optimal performance and protection of critical components like the IGBT.

REFERENCES

- 1) IC with New Short Protection in Hybrid Electric Vehicle IGBT Inverter System”, Proceed- ings of the 17 International Symposium on Power semiconductor Devices & IC's May 23- 26, 2005, Santa Barbara, CA.
- 2) Yan Zhou, Lihua Chen, Shuitao Yang, Fan Xu and Alam Khorshed, “A Low-Cost Gate Driver with Dynamic Turn-off Transient Control for HEV/EV Traction Inverter Applica- tion, ©2017 IEEE
- 3) Joe Drobnik, Praveen Jain, “Electric and Hybrid Vehicle Power Electronics Efficiency, Test- ing and Reliability “, World Electric Vehicle Journal Vol. 6 - ISSN 2032-665, Barcelona, Spain, November 17- 20, 2013.

- 4) Naoki Sakurai, Koichi Yahata, “Gate Driver Integrated Circuit for High-Current and High-Speed Insulated-Gate Bipolar Transistors used in Hybrid Electric Vehicle and Electric Vehicle Inverters, 2017 IEEE.
- 5) Dr. D. Graovac, Dr. A. Christmann, M. Münzer, “Power Semiconductors for Hybrid and Electric Vehicles”, 8th International Conference on Power Electronics - ECCE Asia, May 30-June 3, 2011, The Shilla Jeju, Korea.
- 6) Shaokun Zhang, Tao Fan, Xuhui Wen, “Research on High Power Density IGBT Driver Circuit, 2018 21st International Conference on Electrical Machines and Systems (ICEMS) October 7-10, 2018, Jeju, Korea
- 7) Anup Anurag, Sayan Acharya, Yos Prabowo, “Design Considerations and Development of an Innovative Gate Driver for Medium Voltage Power Devices with High dv/dt”, IEEE transactions on power electronics, 2018
- 8) Z. John Shen, Ichiro Omura, “Power Semiconductor Devices for Hybrid, Electric, and Fuel Cell Vehicles”, Proceedings of the IEEE | Vol. 95, No. 4, April 2007
- 9) KangHo Jeong, KiJong Lee, JiWoong Jang,” The Optimized Gate Driver Design Techniques for IGBT Properties and Downsizing in Eco-Friendly Vehicle”, PCIM Europe 2016, 10 – 12 May 2016, Nuremberg, Germany